

Content controls in Writer

Part 2: Half year later

Miklos Vajna

Software Engineer

vmiklos@collabora.com

2023-02-04



Collabora
Online



FOSDEM





About Miklos

- From Hungary
 - More details:
<https://www.collaboraoffice.com/about-us/>
- Google Summer of Code 2010 / 2011
 - Rewrite of the Writer RTF import/export
- Then a full-time LibreOffice developer for SUSE
- Now a contractor at Collabora





(Rich text) content controls

Like an input field, but can have rich content

- Similar to inline SDT in Word
- Can cover multiple text portions, but not paragraphs (unlike fieldmarks)
- Support nesting
- Have a set of properties on them (no field instruction / result)

is some information about yourself. Your name: **This is a larger font** John





Aliases & tags

- Alias / title is a human-readable identifier, it appears when you enter the content control:

Cambridge, August 4, 2022

- Tag is the same, but machine-readable



Emit only one PDF widget for portions

Writer's rich content vs PDF's widget rectangle

- Inherent conflict, Word resolves this by plain text export
- Can we do better?



Before



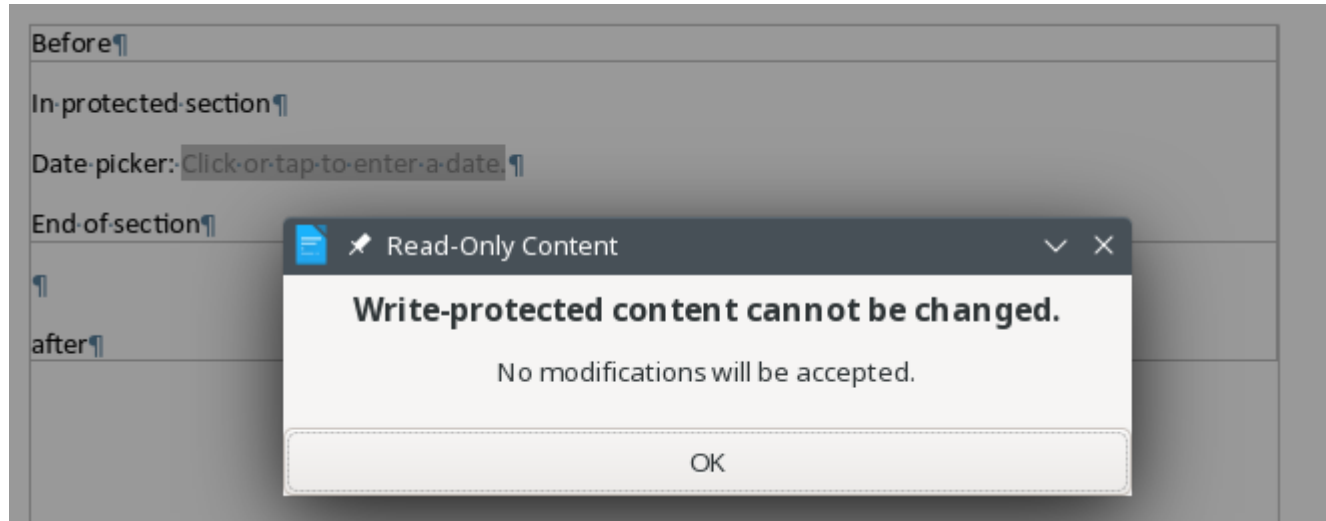
after



Editable in read-only sections

Read-only sections to lock down by default

- But then content controls should be probably an exception



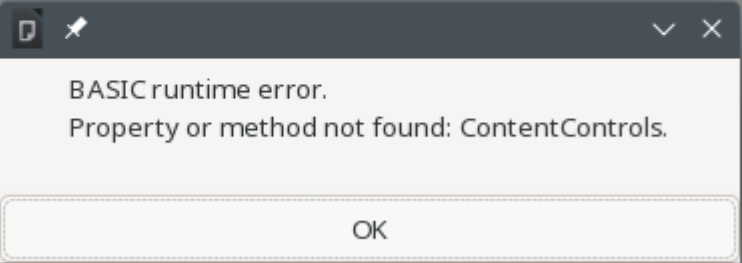


UNO manager for content controls

Building block for VBA

- Similar to e.g. Footnotes

```
5 Sub Main
6
7 GlobalScope.BasicLibraries.LoadLibrary("XrayTool")
8
9 xray ThisComponent.ContentControls
10
11 End Sub
12
```

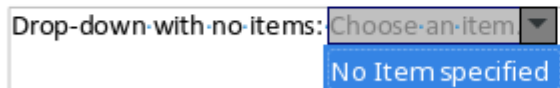




Dropdown with no list items

By explicitly tracking combobox and dropdown state

- Previously: has list items?
- Now: is combobox? Is dropdown?
- Allows having no list items:



Drop-down with no items: Choose an item ▼
No Item specified

The screenshot shows a text input field with the label "Drop-down with no items:". The input field contains the text "Choose an item" followed by a downward-pointing triangle icon. A blue tooltip box is visible below the input field, containing the text "No Item specified".



Fix RTL render of dropdowns

SwContentControlButton needs improving:

- positioning
- rendering
- hit-testing





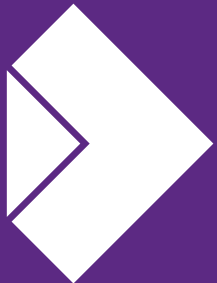
Summary

Lots of polish since LOCon 2022:

- Maps to Word's primary way of form creation (since 2007): structured document tags
- ODF can now represent these, exports to PDF
- Various types
- More properties, editing improvements, better filters, scriptability

The screenshot shows a form with the following elements:

- A text input field labeled "Your name:" with the placeholder text "Click here to enter text".
- A checkbox labeled "I like filling forms".
- A dropdown menu labeled "Favorite color:" with the placeholder text "Choose an item".
- A large, empty rectangular area labeled "Picture:".
- A date picker labeled "Date:" with the placeholder text "Choose a date".
- A text input field labeled "Plain text:" with the placeholder text "Click here to enter text".



**Collabora
Online**

Thank you!

By Miklos Vajna



@CollaboraOffice
hello@collaboraoffice.com
www.collaboraoffice.com

Join the team: col.la/join